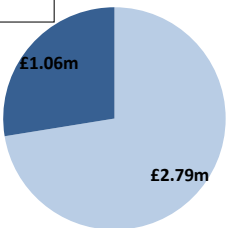


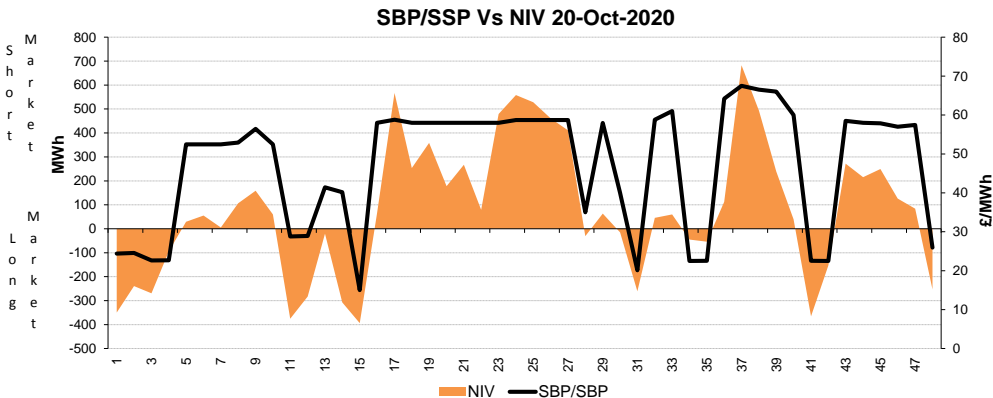
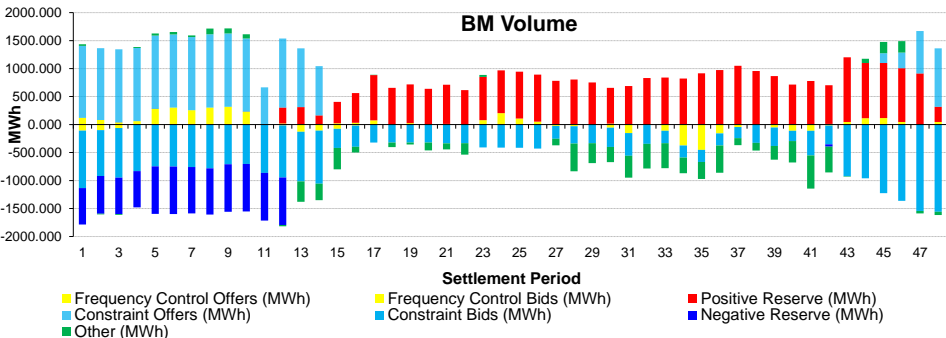
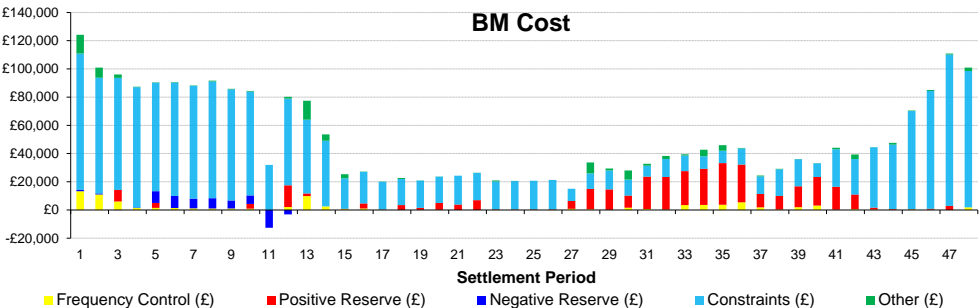
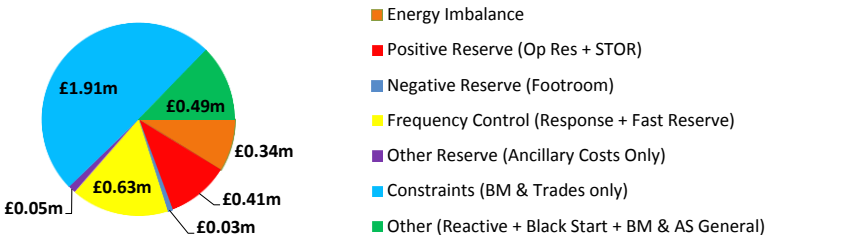
Date: **Tuesday 20 Oct 2020**

**BSUoS Charge Estimate: £3.02/MWh**  
**Total Outturn: £3.86m**

BM Cost (Indicative)  
AS Cost (Estimate)



# Daily Balancing Costs



**Western Link status: Available**

## Commentary

The market was mostly long from 7.30am onwards. Trades and BM Action supported overnight Voltage Control. Trades throughout the day for RoCoF, assisted additionally by BM Action overnight. Thermal export constraints in the North alleviated by BM Action overnight. BM Action also managed thermal export constraints in Wales from the morning, and the East from midday.